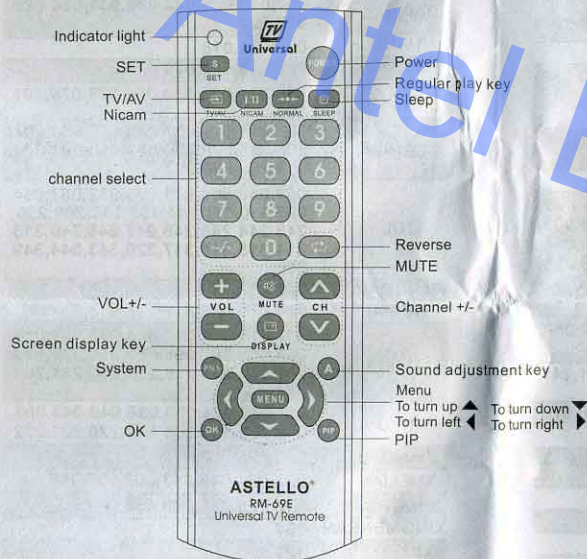


Thank you for purchasing this remote control. After reading this User's Manual, please keep it in a good place for future reference.

Product Introduction

RM-69E is a universal TV remote control put out by our company, which can basically control a majority of TV sets of various brands and models made domestically or internationally in different years. Equipped with code setting and manual code search setting, multiple common functional keys & menu keys and work indicator, the unit is simple to operate, adopts comfortable hand design, and brings you much convenience. The remote control is an optimal choice in case your TV remote control is missing, out of order or damaged.

Panel Description:



Battery Installation

Open the battery cover, put in two new AAA (No.7#) alkaline batteries (not attached) according to the "+/-" symbol inside the battery pack as shown in the figure.



Cautions on Battery Use

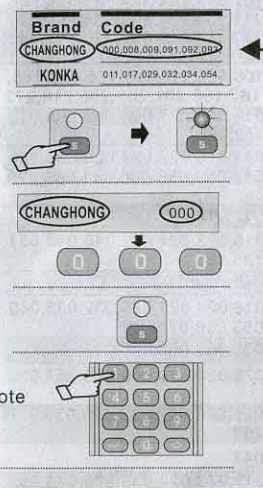
- ※ When the batteries are being replaced, the original setting can remain 45 minutes if no key on the remote control is touched. Otherwise, the original setting will be lost, and you have to reset your device.
- ※ As our remote control of low power consumption, the batteries have 15 months service life under normal conditions. However, its service life may be shortened if used or operated improperly.
- ※ Do not use old and new batteries or batteries of different models at the same time.
- ※ In the event of battery leakage, take out the batteries, wipe the battery compartment clean, and exchange new batteries.
- ※ If this remote control is intended to be not in use for a long time, please remove the batteries.

Setting of Remote controller

Two methods (Method A/B) are provided to set this remote control, any one of which can be used in operation.

A. To search applicable models by entering manual codes

1. Switch on the TV set and find a code that represents the brand of the TV from the code list. Please see the figure:
(the code list attached to the back)
2. Hold the "SET" key until the indicator illuminates,
3. Enter a 3-digit code in the first group corresponding to the model, such as:
4. The indicator goes out. Setting is finished.
5. Detect whether the keys on the remote control can work normally;

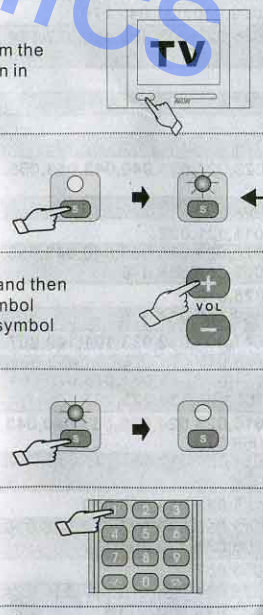


※ If not, restart the setting from Step 1.

★ Due to too many codes corresponding to your TV model, you are recommended to set your TV set code by code, and finally select one code most suitable for your TV set.

B. To search applicable models in a manual steady manner

1. Manually switch on the TV set, and aim the remote control at the TV set, as shown in the figure:
2. Hold the "SET" key until the indicator light illuminates.
3. Press the "VOLUME +" key one time and then release it to see whether a volume symbol appears on the TV screen. If no such symbol occurs, repeat the procedure.
4. Upon appearance of the volume symbol (■■■■■■■■■■), press the "SET" key immediately, and then the indicator light goes out. Setting is finished.
5. Test whether the keys on the remote control function well;



※ If keying does not work, reset from Step 2.

Warm Tips:



If any problem occurs during setting or using this remote control:

- To set this remote control, please follow the steps in "To search applicable models by entering manual codes" carefully. In case you are still unable to control your device after setting the first group of codes, set other codes one by one in the order of codes. If all the codes fail to enable your remote control functional (or if your household appliance is not included in the list), please try "To search applicable models in a manual steady manner".
- If you have made mistakes during code input, you can simply re-enter a proper three-digit code as long as the work indicator does not go out. You need resetting from step 1 if it goes out.
- When searching applicable models in a manual steady manner, you must be patient to wait when search is being processed because of too many codes
- If this remote control is operated improperly, the unit may be locked up. In this case, remove the batteries, replace them 20 minutes later, and the unit can restore its normal functions.

Technical Parameters

Distance of remote control: about 8 meters (depending on types of machine)
Type of power supply: DC 3V Battery model: AAA battery, 2pcs

After-sale Service

If any problem occurs or this unit fails to work temporarily when using this remote control, please contact our company immediately, and we will make every effort to provide you with excellent services. However, this Company is not liable for a remote control subjected to unauthorized disassembly or repair.

ASTELLO®

CODE FORM FOR THE COMPONENTS

Brand	Code
AIWA	009,057,058
AOLINPIKE	033,053,056,079
ANHUA	017,001,032,047
AOLINPU	104
BENQ	294
BAIHUA	016,025,033,053,056,079
BAIHEHUA	023,024,040,043
BAILE	016,025,012,019,026,027,028,029,030,031,042
BAOSHENG	011,025,016
BaoHuaShi	033,053,056,079
BEIJING	008,012,011,019,016,023,024,025,027,028,029,030,031,033,040,043,050,053,056,026,079,091,039,042,051,021,122,126,233,265,298,351
CAILING	102
CAIHONG	011,025,016
CAIXING	023,024,040,043,073
CHANGCHENG	011,016,017,023,024,025,033,040,043,053,056,001,012,019,027,026,028,029,030,031,042,079
CHENGDU	011,025
CHANGFENG	011,053,056,045,046,024,079,033
CHANGFEI	011,016,025,042,123
CHANGHAI	011,025,016,123
CHUNLAN	142,107,131
CHUNFENG	016,025,033,053,056,079,124
CHUNSUN	011,025,016
CONROWA	000,006,007,008,010,016,025,033,053,055,056,045,046,048,073,099,131,204,258
CHANGHONG	000,008,009,091,092,093,010,011,014,016,026,028,033,051,052,057,058,067,071,086,087,088,100,159,162,182,183,184,226,288,289,290,291,292,297,300,336,337,338
CHUANGJIA	073,101
DUONGJIE	073,097,101
DONGDA	016,025
DONGHAI	016,025
DIGITEC	214,150,147
DONGLIN	077
DETRON	212
DAYU	012,042,031
FEILU	011,016,025
FEIYUE	011,016,023,024,025,040,043
FEILANG	016,025
FEIYAN	033,053,056,079
FUJITSU	048
FULI	047
GOLDSTAR	009,019,023,024,040,043,098,140
GANXIN	011,017,023,024,027,040,041,043
GANGTAI	097
HUAQIANG	033,053,056,079,236

Brand	Code
HISENSE	000,006,007,008,010,014,015,025,045,046,057,102,103,105,107,115,116,128,129,130,131,138,139,171,172,173,174,185,186,187,188,189,190,191,224,225,233,265,266,269,270,271,273,274,299,304,305,306,307,309,318,319,339,340,341,342,348
Haier	103,105,112,118,119,175,178,185,186,187,188,201,205,206,218,272
HITACHI	007,015,014,027,000,006,008,010,048,179,228
HITCHI	007,011,015,023,024,028,033,034,040,043,053,056,060,061,065,079,102
HUAFA	007,016,025
HUANGHE	011,016,023,024,025,040,043,051,103,125,155
HUANGHAIMEI	016,025
HUANGSHAN	011,016,023,024,025,032,033,040,043,053,056,079
HUARI	007,033,053,056,079
HAIYAN	011,023,024,033,040,043,053,056,079
HAIHONG	016,025,026,027,028,029,030,077,103,268
HAILE	032,047
HUANYU	011,015,023,024,033,040,043,053,056,009,057,058,079
HONGMEI	003,011,016,018,023,024,025,033,040,043,056,009,057,058,079
HONGYAN	011,033,053,056,079
HUANGLONG	016,025
HUIJIABAN	101
HUODAKEJI	032,001,017,047
INTEL	213
IMPERIAL	033,053,056,012,019,025,026,027,028,029,030,031,042,079
COWN	016,025,028,033,053,056,079,124,178
JIALICAI	016,025,028,033,053,056,079,124,178
JINGXINGBAN	104
JINGLIPU	038,057
JIAN SHENG	104
JVC	089,161
JUHUA	011,023,024,033,040,043,053,056,079
JINGHAI	009,057,058,099
JINFENG	001,011,021,022
JINTA	016,023,024,025,033,040,043,053,056,009,057,058,079
JINQUE	011,025,016
JINQUE	032,033,053,056,079
JIAHUA	017,047,001,032,033,101,149,207
JINXING	007,008,011,013,024,025,032,033,039,051,057,065,071,073,079,091,097,102,107,138,225,227
KAIGE	011,016,023,024,025,033,040,043,053,056,079
KUNLUN	001,011,021,022,033,025,012,042,040,039
KUAILE	016,025,033,053,056,079
KANGLI	027,012,016,019,025,026,028,030,031,033,073,120,204,271
KANGHONG	009,058,057
KANGLI	016,023,024,025,040,043,011,026,027,028,029,042,005
KANGYI	016,025,033,053,056,079,121
KONGQUE	011,016,023,024,025,033,040,041,043,124

Brand	Code
KANGHUA	103
KONKA	011,017,029,032,034,054,067,069,071,075,076,077,078,079,080,081,107,113,117,157,163,164,165,177,210,235,250,251,252,253,254,255,256,257,301,302,303,321,323,324,345
KANGWEI	077,101,104
LONGJIANG	011,033,053,056,079
LIHUA	011,
LG	024,040,098,043,140,259,260,261
MEILE	011,023,024,033,040,043,053,056,009,057,058,079
MUDAN	001,002,011,016,020,021,022,025,032,033,039,040,043,053,056,059,063,065,079,101,107,145,146,149,218,223
MENGMEI	023,024,040,043,
MANTIANXING	114
MITSUBISHI	011,051
NANSHENG	011,033,053,056,079
NIKON	009,057,058
NEC	006,011,016,004,025,033,053,056,024,079
NEC	089,140
NANBAO	016,025,033,053,056,009,057,058,079
OULIN	101
PANDA	001,011,016,021,022,023,024,025,026,028,033,040,043,053,056,009,057,058,051,062,073,079,089,091,061,124,125,181,203,204,208,263,264,296,101
PDLYTRON	151,152,214
PANASONIC (NATIONAL)	020,001,002,014,015,021,022,059,066
PHILIPS	013,023,024,039,040,043,141,241,242
QINGDAO	001,011,021,022,033,053,056,079
RIZHI	073,097
ROWA	011,013,016,023,024,025,040,043,096,127,248,267,268
RIHONG	073
Ruyi	011,015,023,024,040,043,
RISHENG	097
SHARP	003,018,016,025,135,136,137
SHENCAI	007,016,025,033,053,056,079
SHANCHA	011,033,053,056,079
SHANGHAI	009,011,016,017,022,023,024,025,033,040,043,053,056,057,058,079,123
SHAOFENG	011,015,000,006,007,023
SHENYANG	011,016,025,046,045,033
SAIGE	011,025,016
SONGBAI	016,025
SANYUAN	003,011,016,018,023,024,025,040,043
SANJIAN	033,053,056,079
SKYWORTH -RGB	011,025,033,045,046,060,070,071,072,073,074,079,083,101,107,108,109,143,160,168,169,170,176,180,181,194,195,196,197,198,199,200,232,234,275,276,277,278,280,281,282,283,284,308,310,311,312,325,326,327,346,347
SHANSHUI	008
SUMO	214
SANKEN	215

Brand	Code
SONY	041,049,005,094,106,148,237,238,239,240
SAMSUNG	008,011,016,021,024,025,033,037,039,040,043,050,051,091,113,123,
SANYO	008,000,007,014,015,033,035,053,056,079,105,132,133,134,202,223,352,353,354
SANLING	036,044
SHENGCAI	057,101
SHUYUAN	131,204
SONGDIAN	101
SEYE	097
SHENGLI	004
SHERWOOD	016,025
SHANGGUANGDIAN	158,166,167
TIANKEBAN	101
TIANGENGBAN	101
TAISHAN	011,016,025,042,038,031,030,029,028,027
TIANE	003,011,018
TONGGUANG	033,053,056,079
TOBO	016,025,033,053,056,077,079,101,103
TOSHIBA	000,014,016,027,033,053,056,007,008,015,028,030,089,090,091,079,159,285,286,287
TCL	051,053,068,071,073,082,083,084,085,110,111,144,156,199,209,216,243,244,245,246,247,248,249,313,314,315,316,317,320,343,344,349,350
WARUMAIA	031,012,042
WEIPAI	016,025
XIAHUA	011,016,024,027,025,033,053,054,055,056,060,098,080,095,079,073,209,211,217,218,229,230,231,262,295
XIHU	011,023,024,033,038,040,043,053,079,098,131,204,219,220,221,222
XIANGYU	016,025,032
XUELIAN	023,024,040,043,009,057,058
XINAGHAI	016,025,033,053,056,079
XINGMENBAN	104
XINSIDA	123
XIANGYANG	033,053,056,079
XINGFU	016,025
XINRISONG	009,057,058,101
YINGGE	016,023,024,025,040,043
YUHANG	016,025
YONGGU	016,023,024,025,040,043
YONGBAO	009,057,058
YOULANASI	011,023,024,040,043
YAJIA	033,053,056,079
YOUSIDA	016,025,009,057,058
ZHUHAI	016,025,042
888	033,053,056,079
OTHER BRAND	036,044,057,073,077,097,101,102,103,104,106,114,178,293,328-335